

Important information related to the data system for printed trade fair panels

Order Form

The order form must be filled in completely and correctly. Without the order form the order acceptance is not possible. From the time of the correct data input and the completion of the order you have to consider a production time of 10 working days.

File Format for Printing

Pdf Adobe X3, fonts converted to paths, colour space CMYK

All data are created with a circulating overfill of 3mm (without crop marks)

For example, if you create a panel of 1000 x 1000 mm, it will have the final format 994 x 994mm + 3mm trim. This cropping example also applies to all other plate dimensions!

(For example: 994 x 494 + 3mm trim = 1000 x 1000mm) (see sample picture on page 2a)

Door Data

All door panels must be 974x984mm + an overfill of 3mm

Creation of Large Motives

In a graphic consisting of several panels, the corresponding work surfaces are created next to each other by putting the graphic above. When saving, you have a multi-page PDF including all working surfaces (see sample picture on page 2b)

Data Resolution

For 1:1 print data you should keep at least 150 dpi. For 01:10 print data you should keep at least 300 dpi.

Other important information

In case of a **TV opening**, it must be noted which opening it is. If there is no indication, the standard TV opening will always be used.

Always mark the plate which should get a TV opening so that we can recognize it immediately.

A **door set** is made of four panels. Always indicate whether the backside is also to be printed. If no information is given, blank panels will be included in the scope of delivery.

We only check the data for resolution.

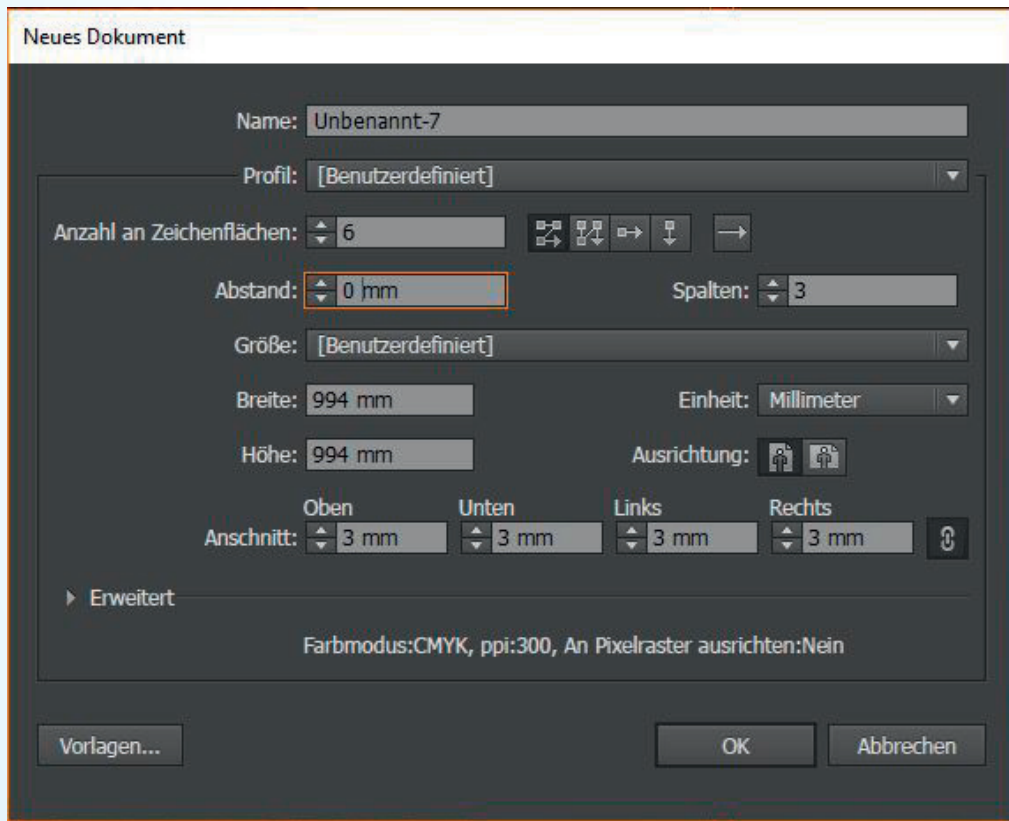
The creator is responsible for the spelling and the condition of the texts and graphics.

For further questions, do not hesitate to contact us!



DWS Media GmbH
Südallee 9
90475 Nürnberg
Tel.: 0911 / 517 097 0
info@dws-gruppe.de

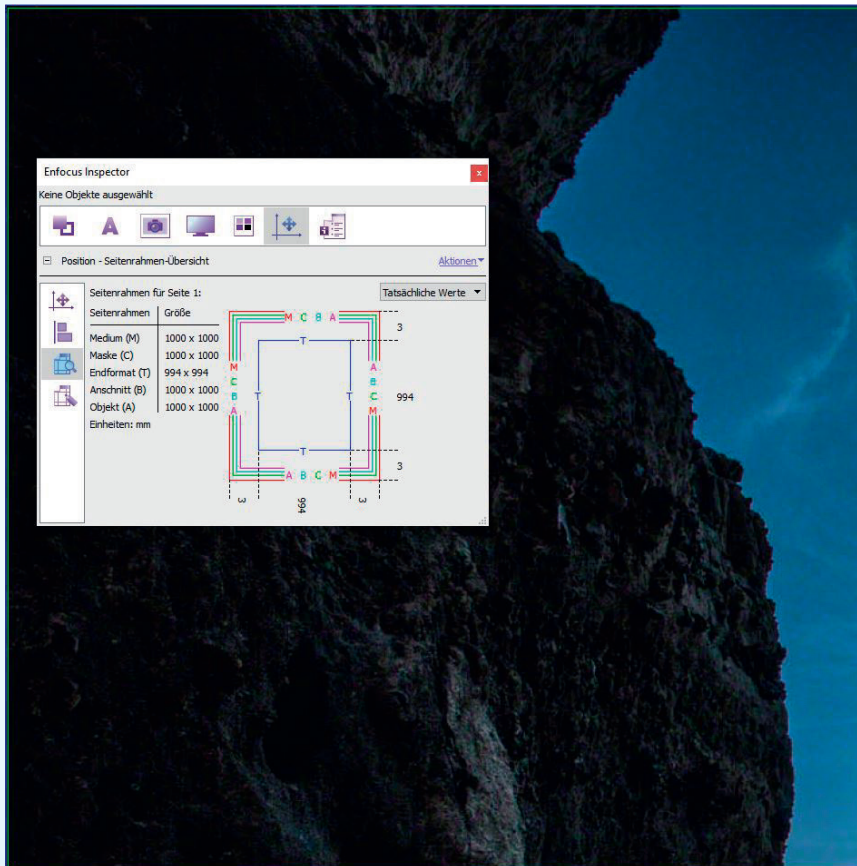
Correct execution of the data input:



Result:



Correct execution of the cutting indications:



Important Information for backlite Panels



In case of backlit panels, please note that about 1 cm is not illuminated all around because the magnetic tape runs at these points. This information must be considered for layout purposes. As a consequence, the motif/text must be put away from the edge.